

SLC2100 Troubleshooting Flowchart

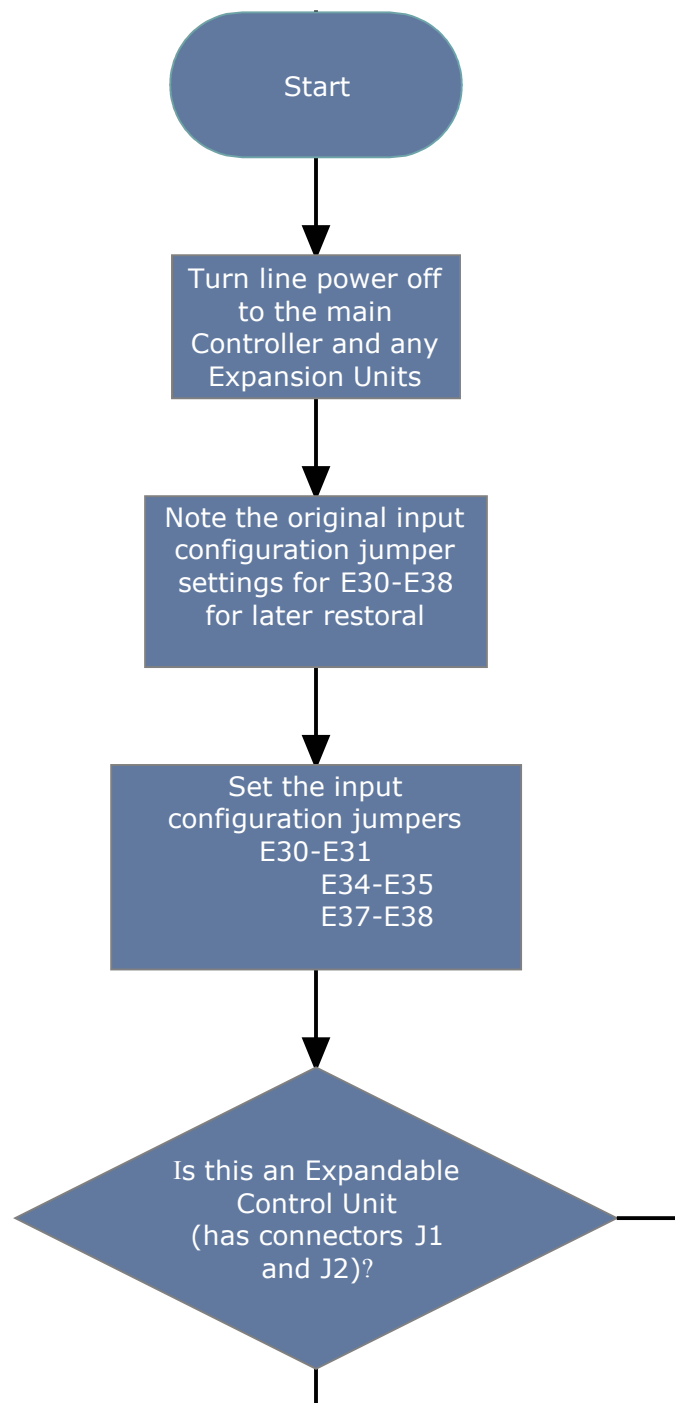
Rev: 03/01/08

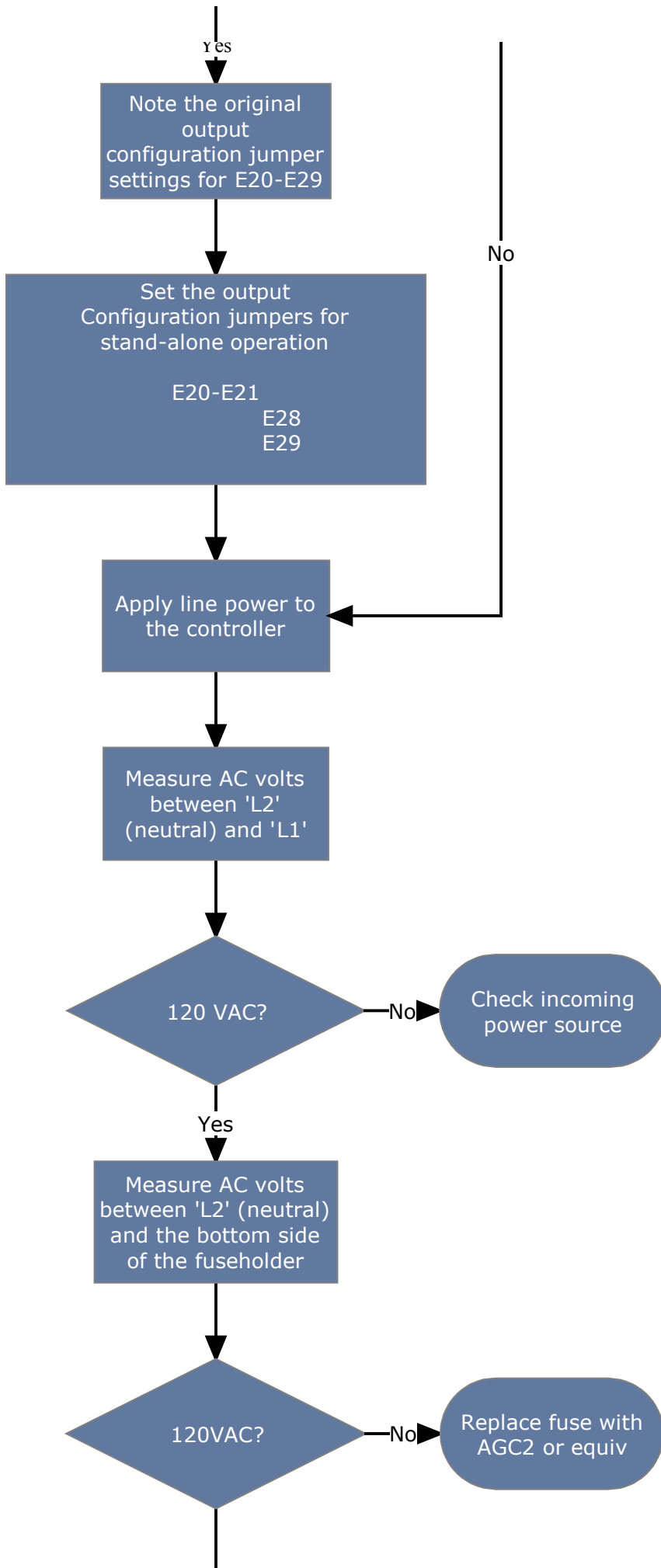
This procedure is used to determine if the main controller is functional. This test starts with the ohmic input configuration for simplified testing. You will need to temporarily change the input configuration jumpers to this setting if the input sensor sends a voltage or current signal. If this is an Expandable Control Unit (has connectors J1 and J2 installed), you will temporarily change the output jumpers to configure it as a stand-alone unit.

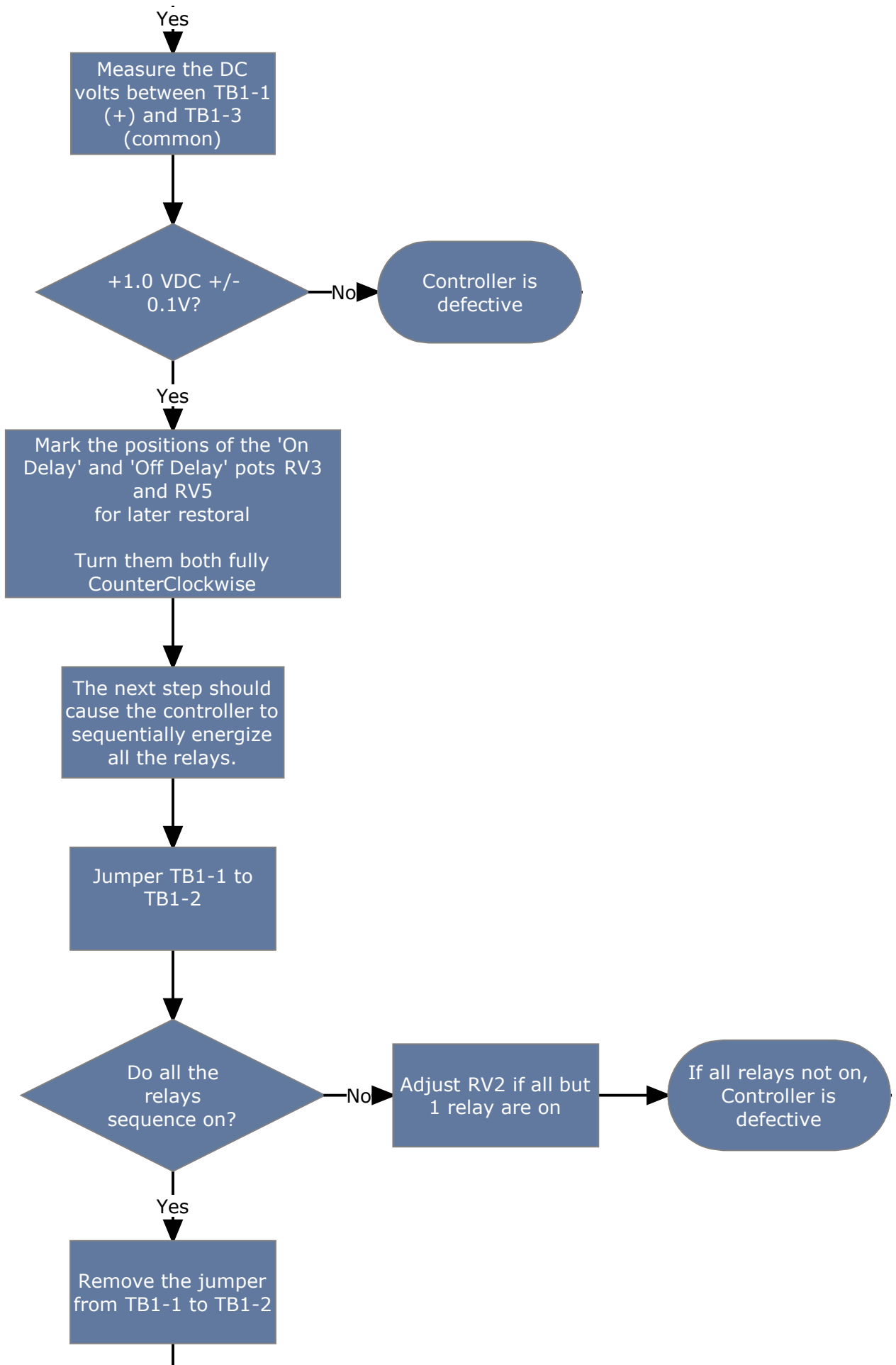
A test for systems that contain Expansion Units is also included.

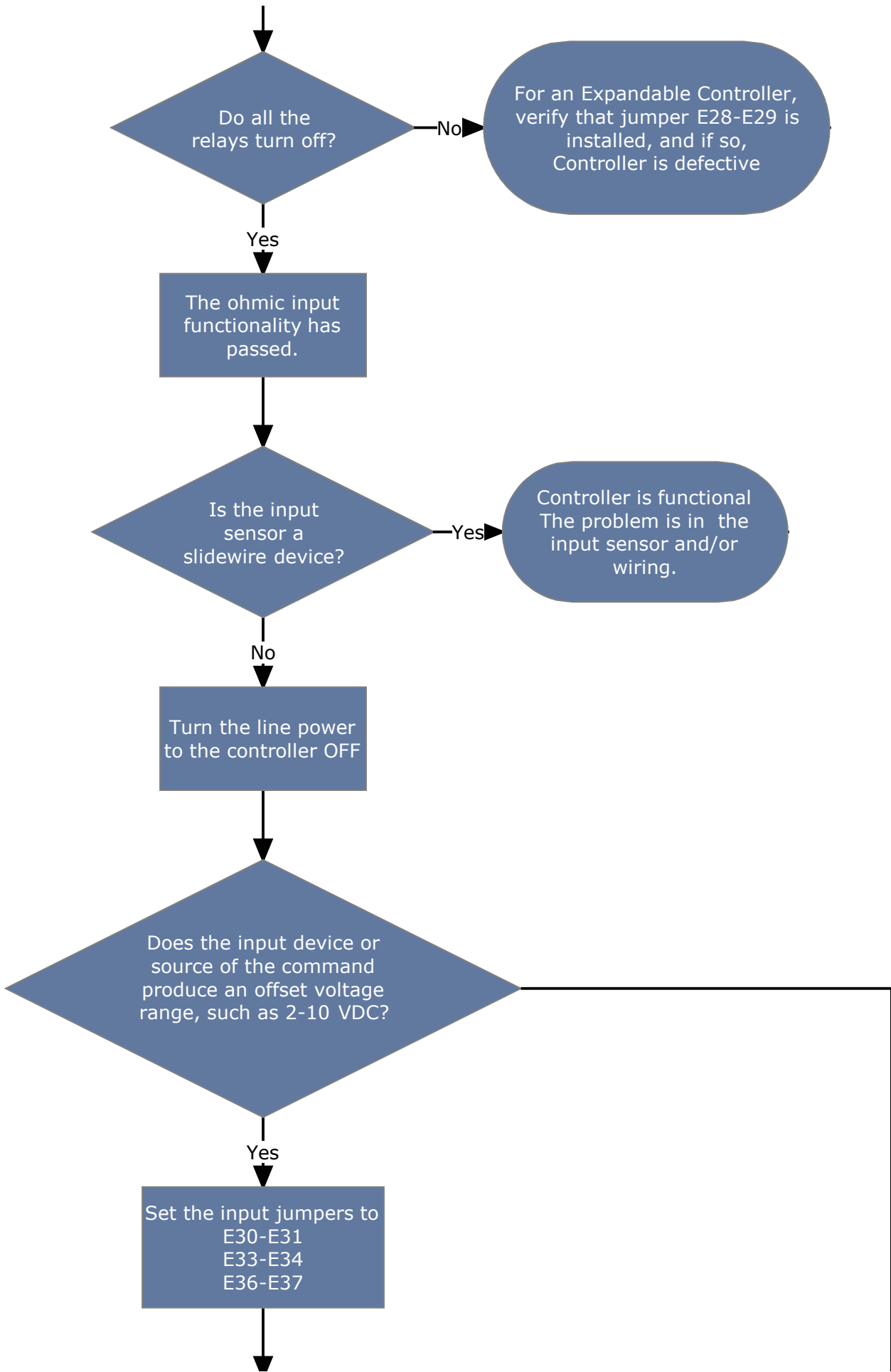
Required Equipment:

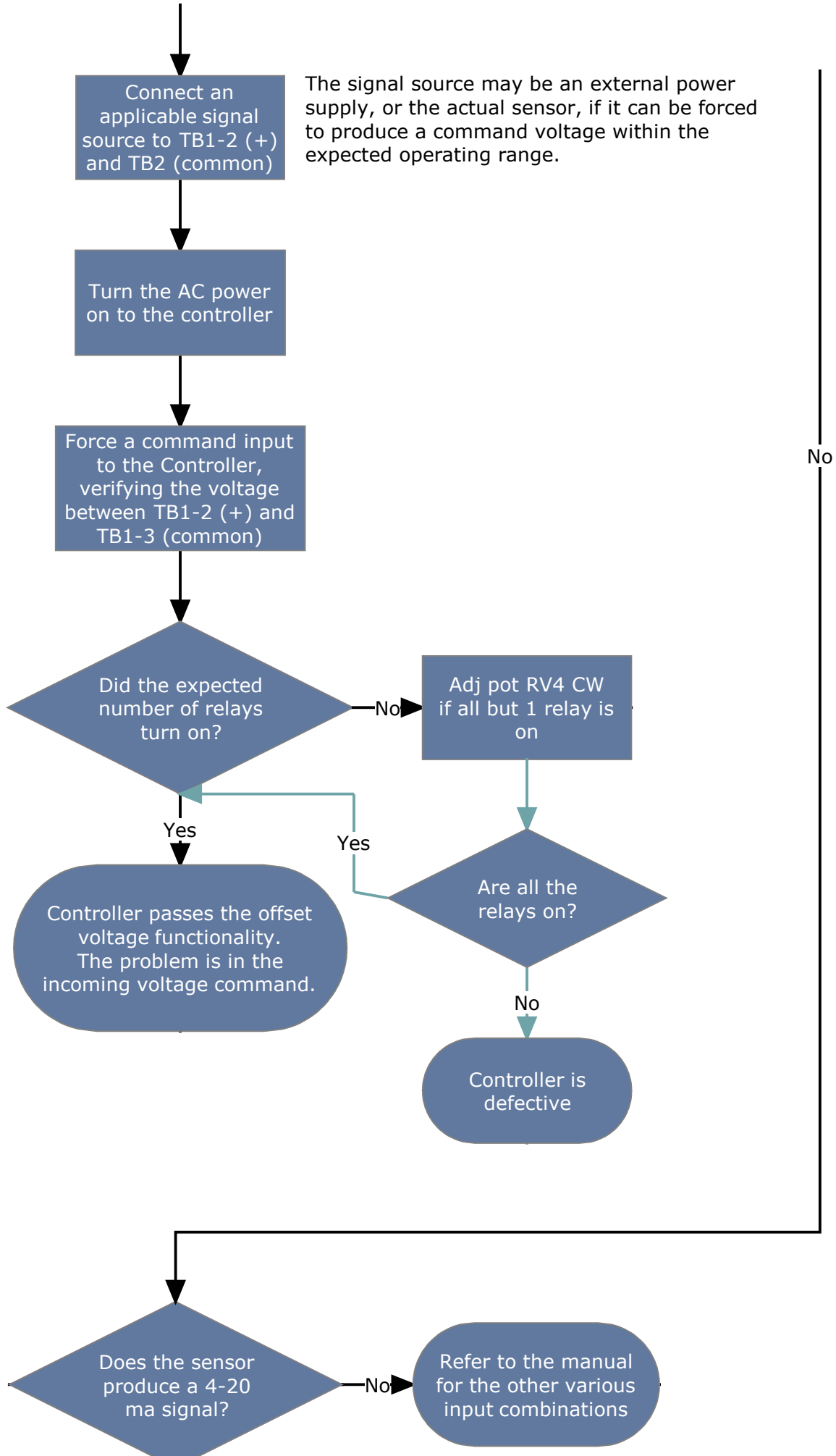
- Voltmeter or Digital Multimeter
- For sensors or signal inputs that produce a voltage or current, a means to simulate this signal is required.

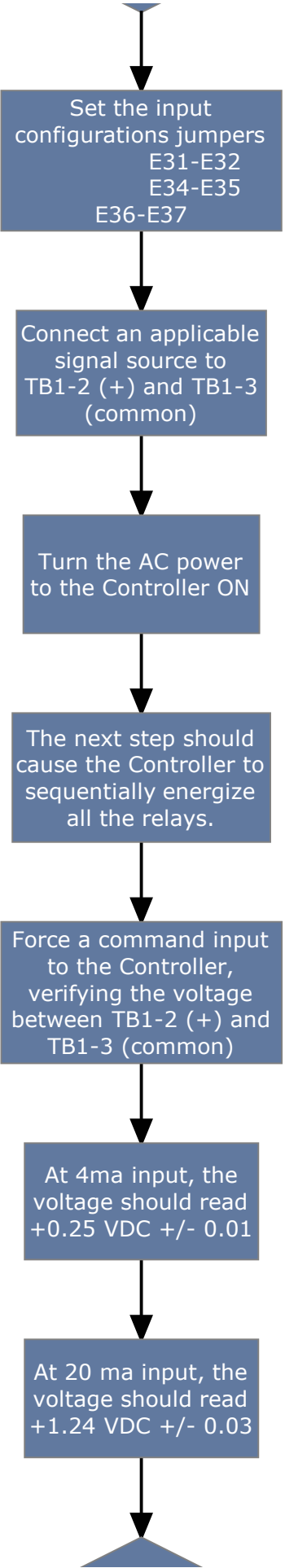


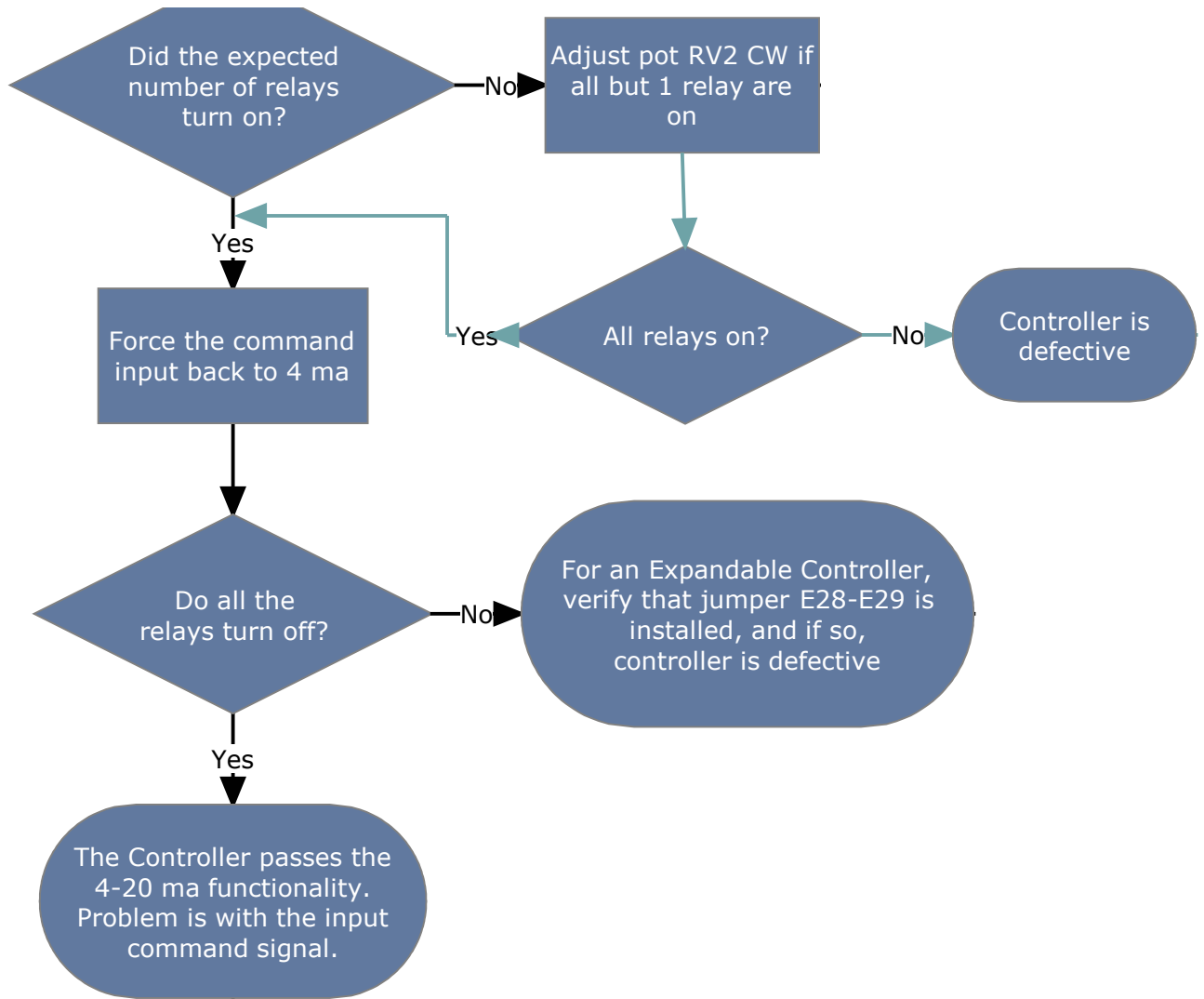




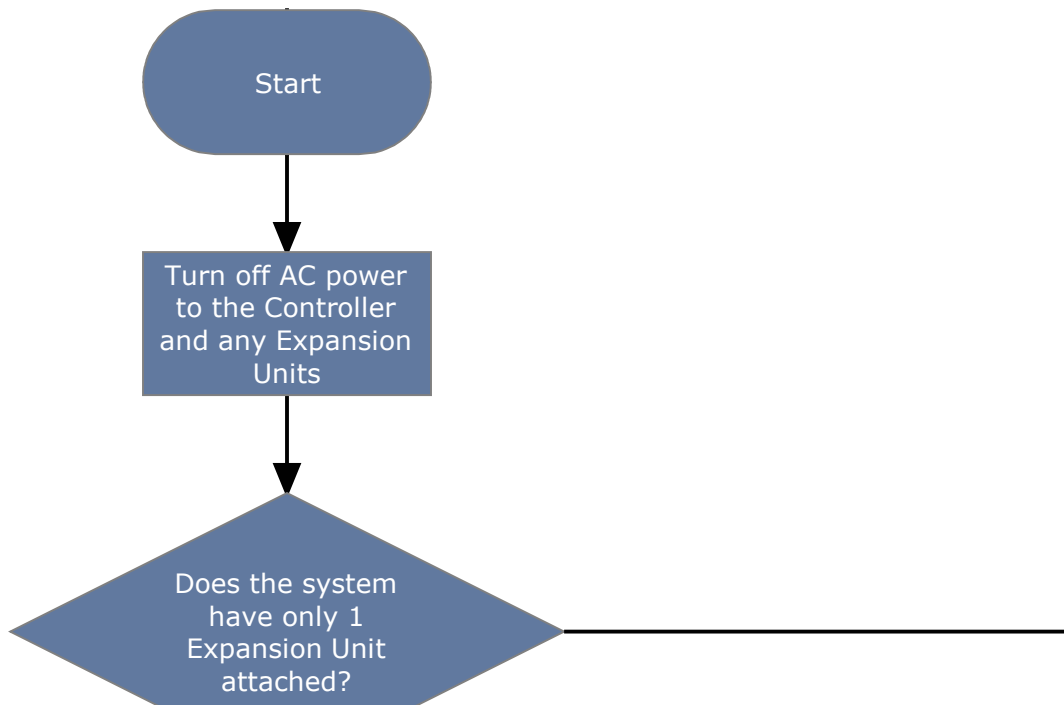


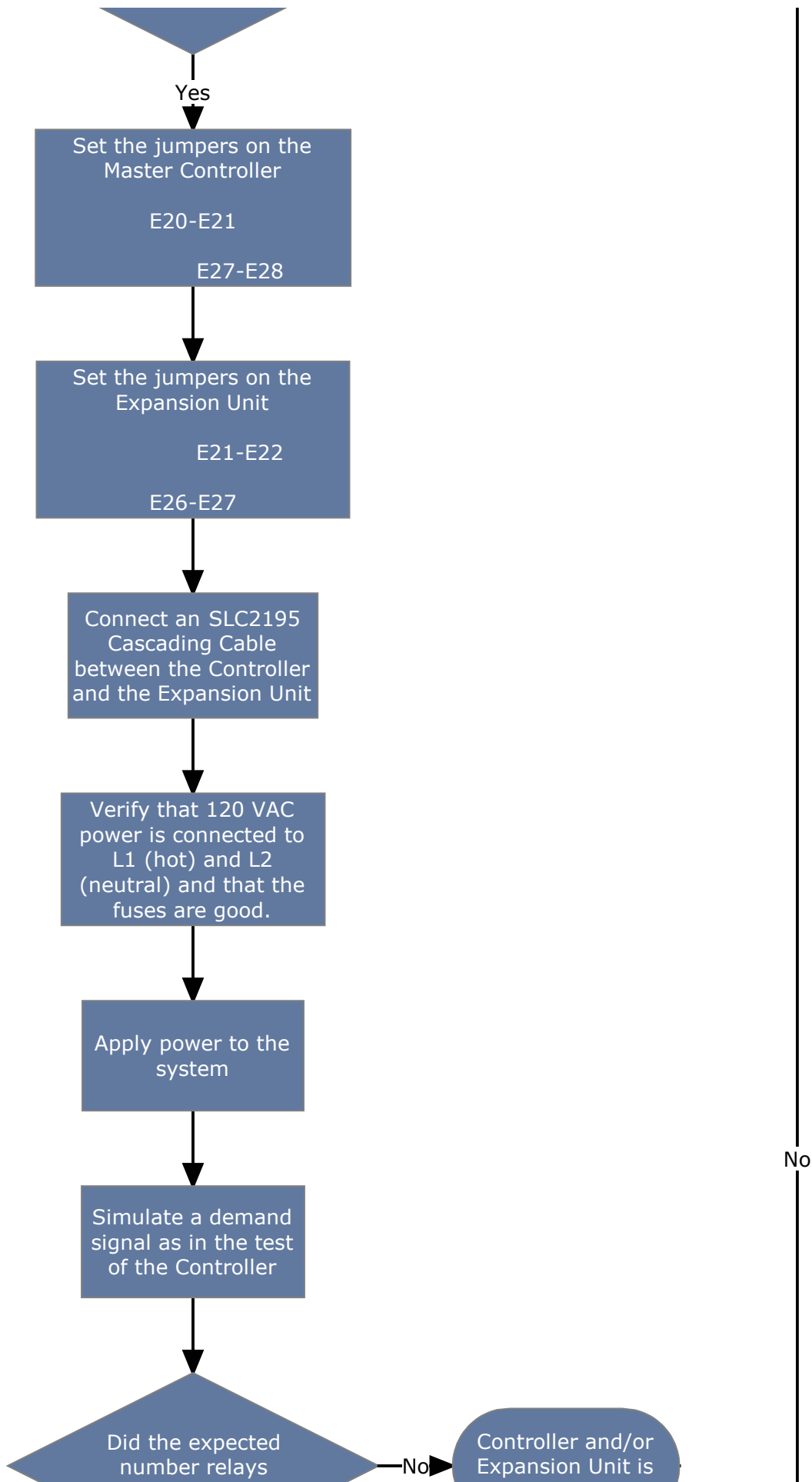


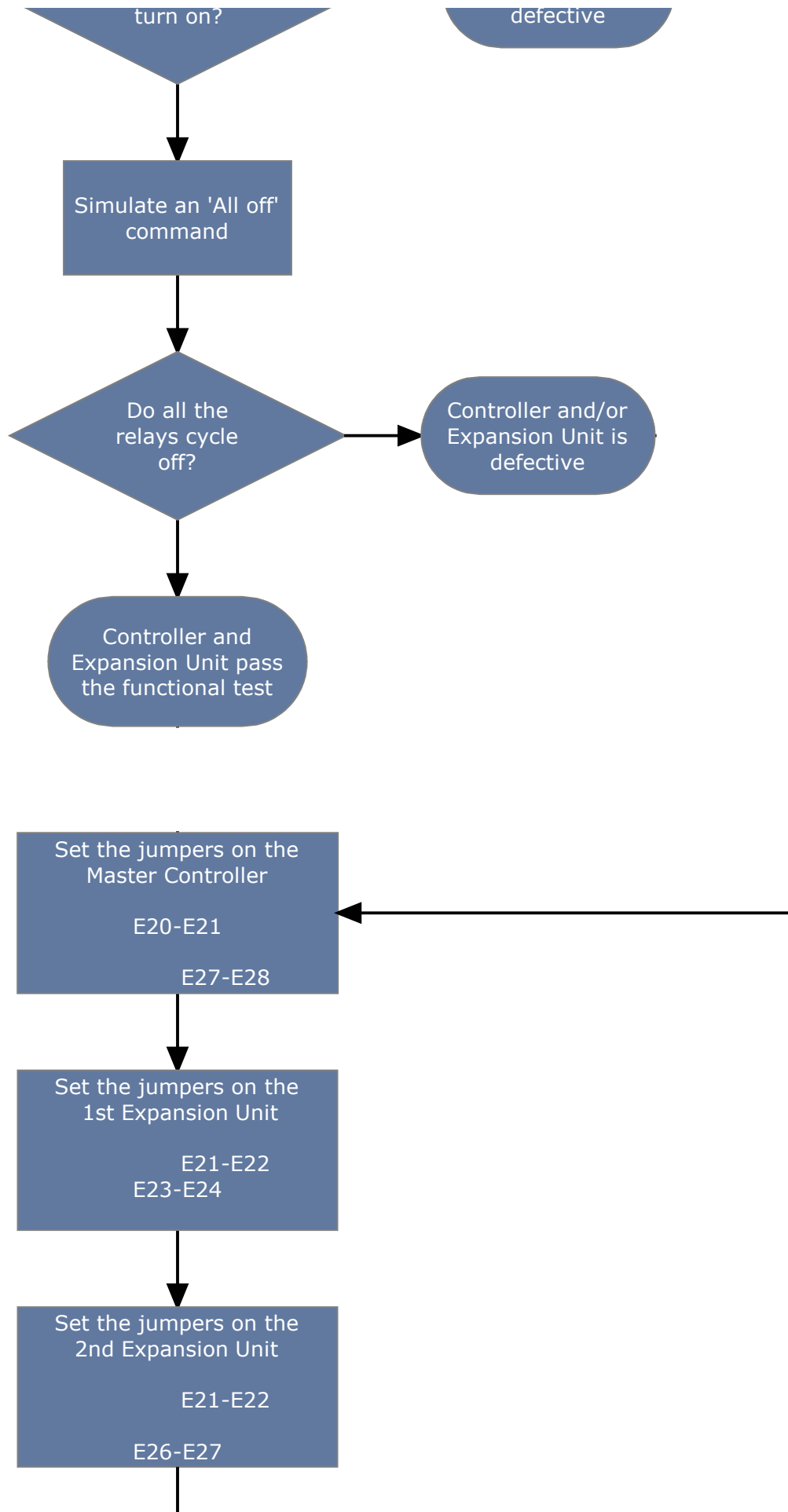


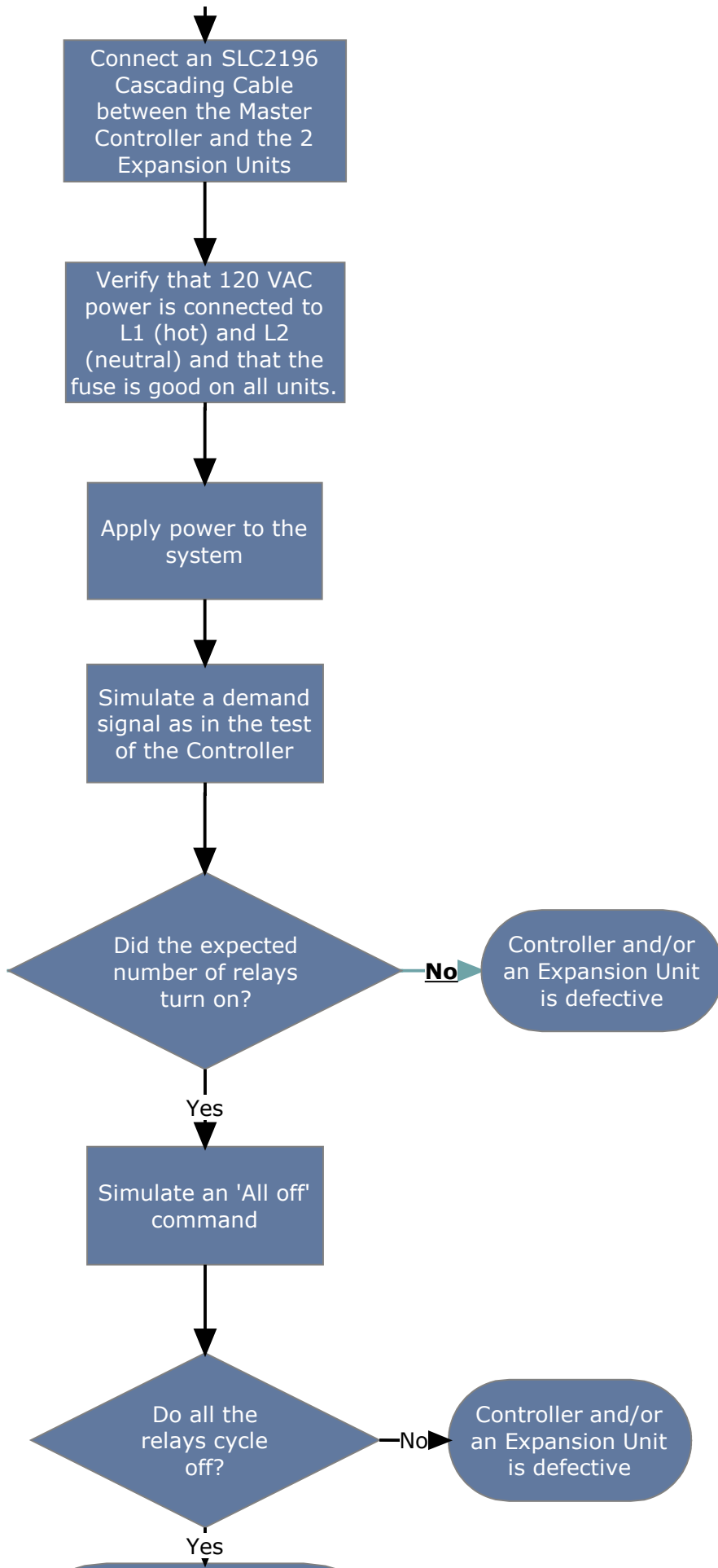


For systems with an Expansion Unit attached









Controller and Expansion
Units pass the functional test
Restore all jumpers and RV3
and RV5 to their original
positions