

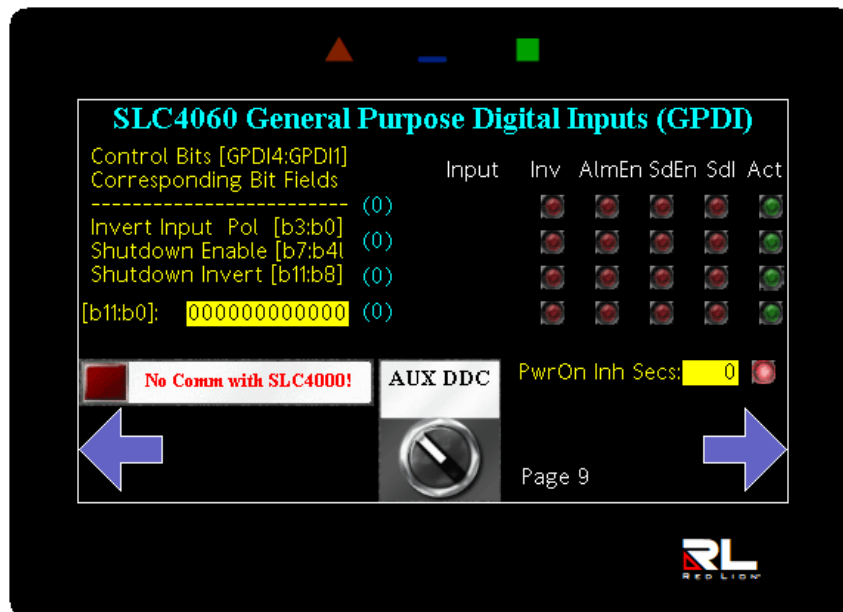
Product Notification - GPDI Shutdown Polarity Inversion

03/01/2022

A new feature has been added to the Selectronix Building Management Interface for single boiler systems that utilize the Shutdown feature for individual GPDI signals. Each GPDI input may be modified by an inversion bit to create a *logical input*. The Shutdown Enable bit previously *activated the shutdown mode whenever the logical input was active*. A new bit allows inversion of the Shutdown sense of this logical input.

Example:

- An input is used to indicate the safety string Status,
 - It is configured as a non-inverted GPDI signal, so an active signal displays as ‘ACT’ on the SLC4075 touchscreen GPDI page.



- *This input has the Shutdown bit enabled, and also the Shutdown invert bit set, so that the Shutdown mode is enabled with an inactive GPDI bit.*
- The configuration of this bit, along with the other GPDI bits are recommended to be set in the OnStartup file, but field configuration is also enabled.

Firmware Requirements:

- SLC4075-x, TSGW, firmware V3.01+
- SLC4060 V2.00+
- SLC4000-x V5.24+
- **Comments or Questions?**
 - Feel free to call or email us at customerservice@selectronix.us.