

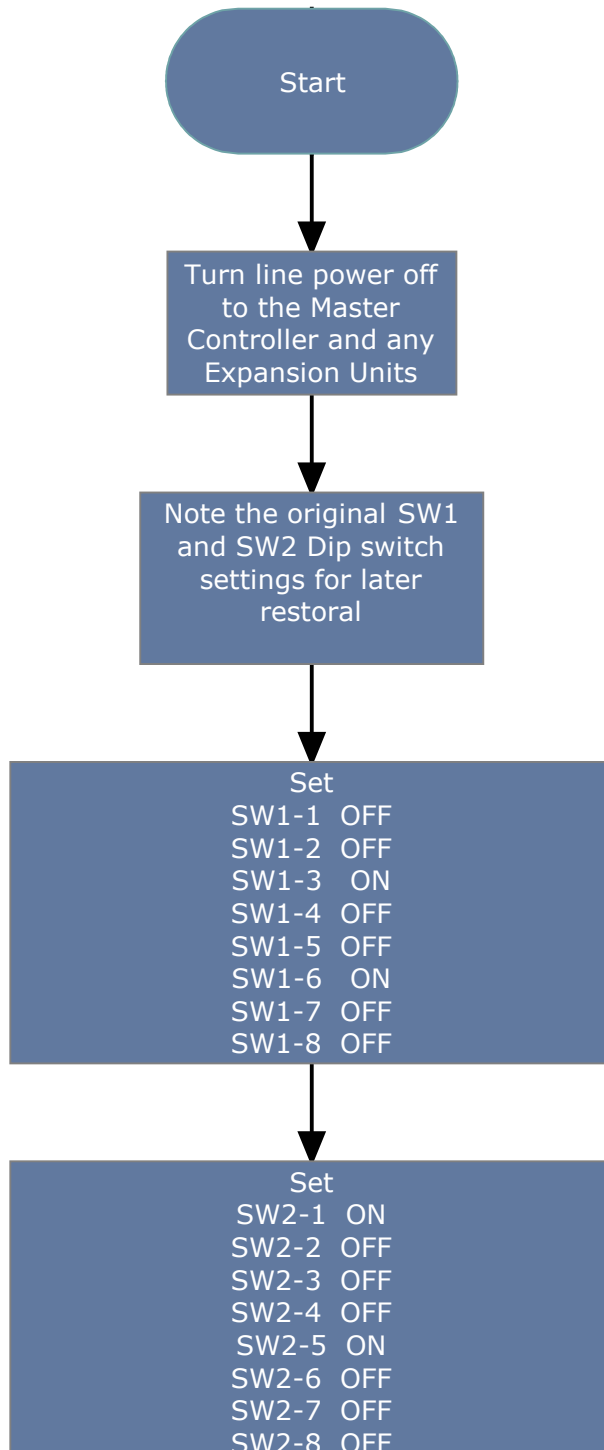
SLC4000 Troubleshooting Flowchart

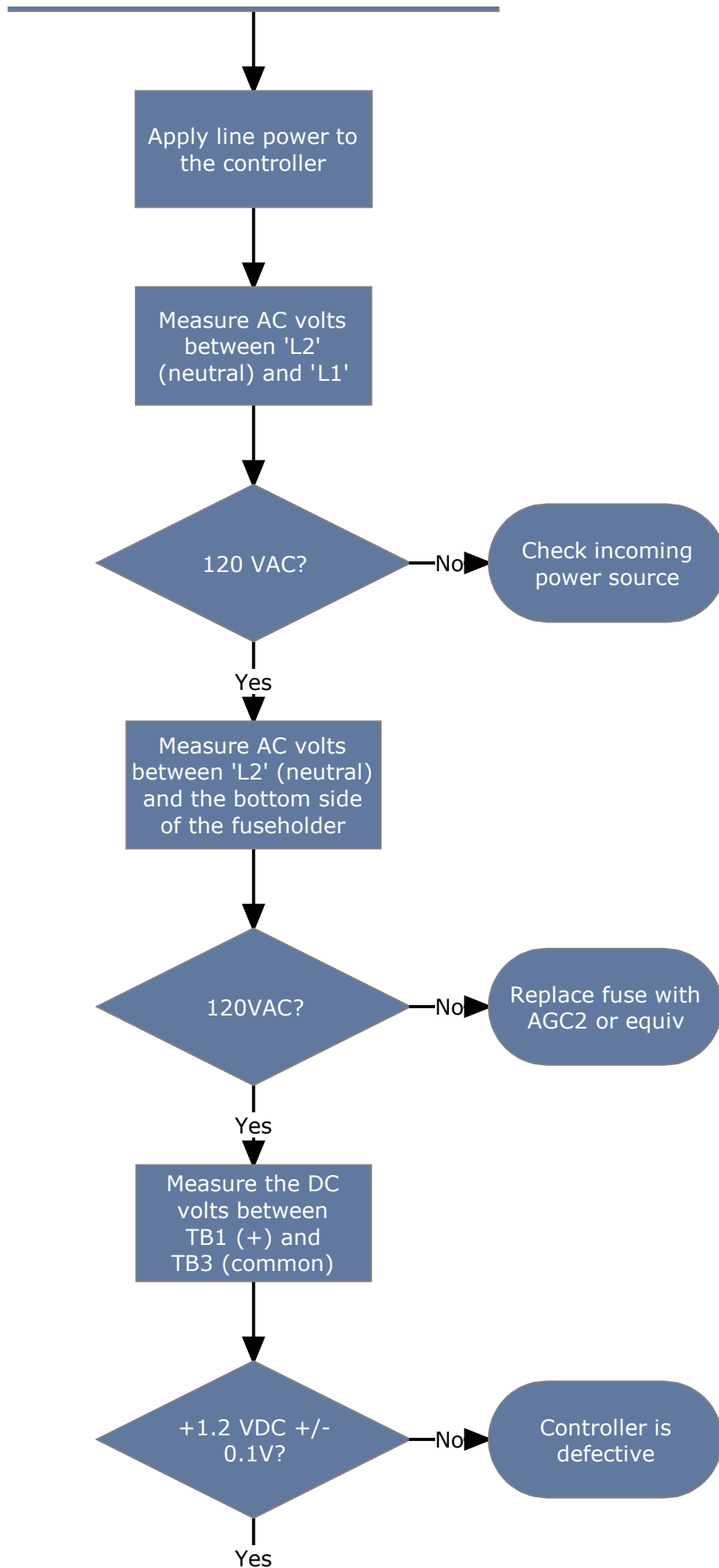
Rev: 02/26/08

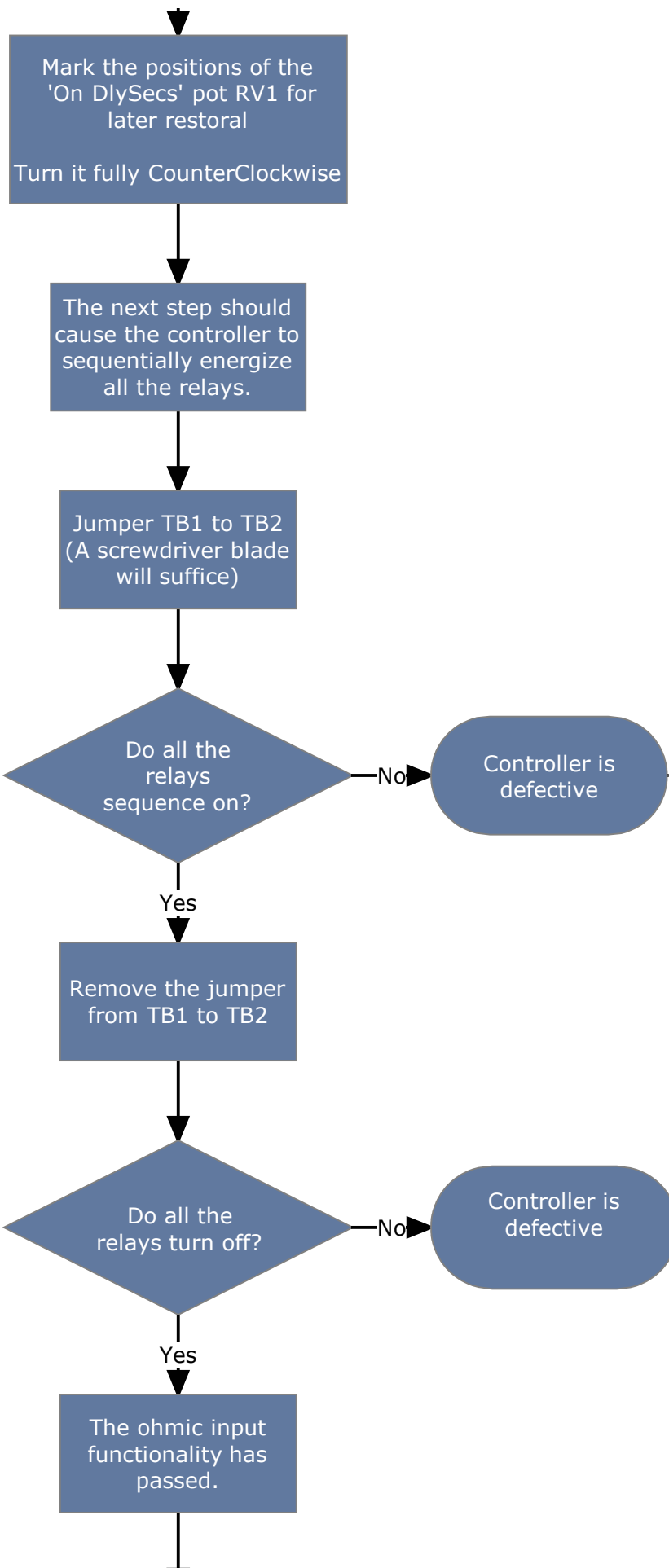
This procedure is used to determine if the Master Controller is functional. This test starts with the ohmic input configuration for simplified testing. You will need to temporarily change the input configuration switches to this setting if the input sensor sends a voltage or current signal. For multiple unit systems, verify each unit as a Master Controller, then configure them for the appropriate Expansion Unit number and test as a system.

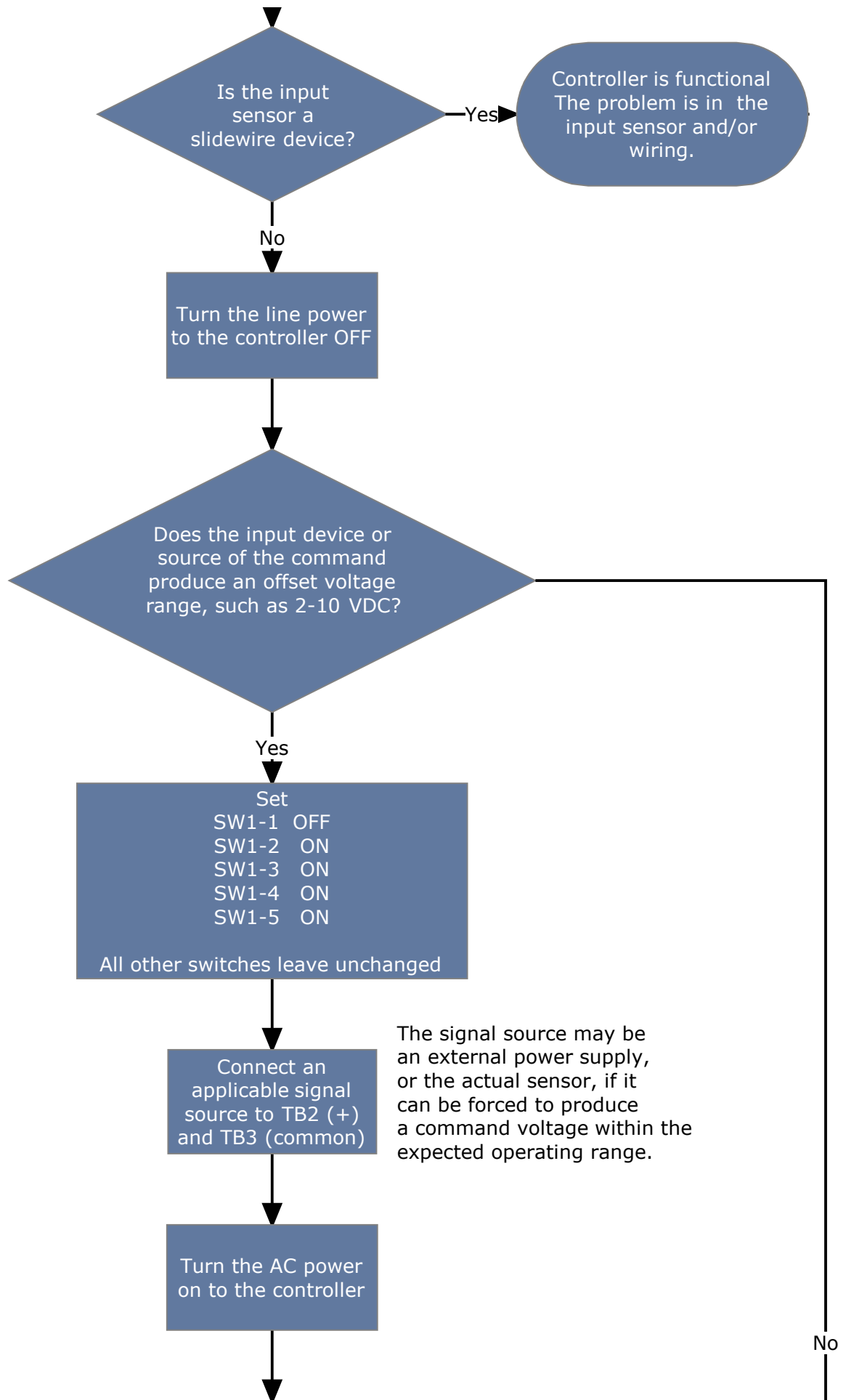
Required Equipment:

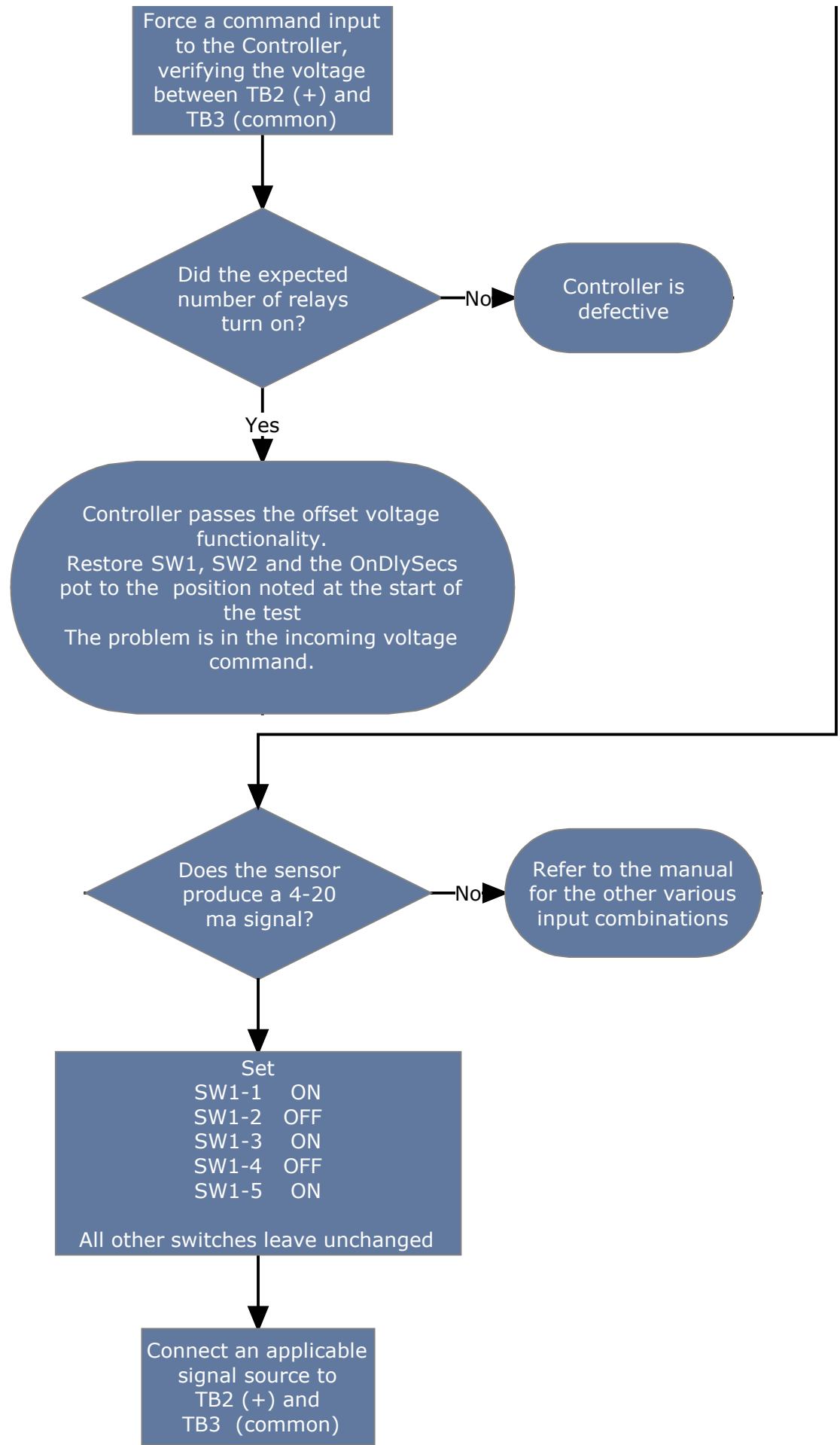
- Voltmeter or Digital Multimeter
- For sensors or signal inputs that produce a voltage or current, a means to simulate the signal is required.

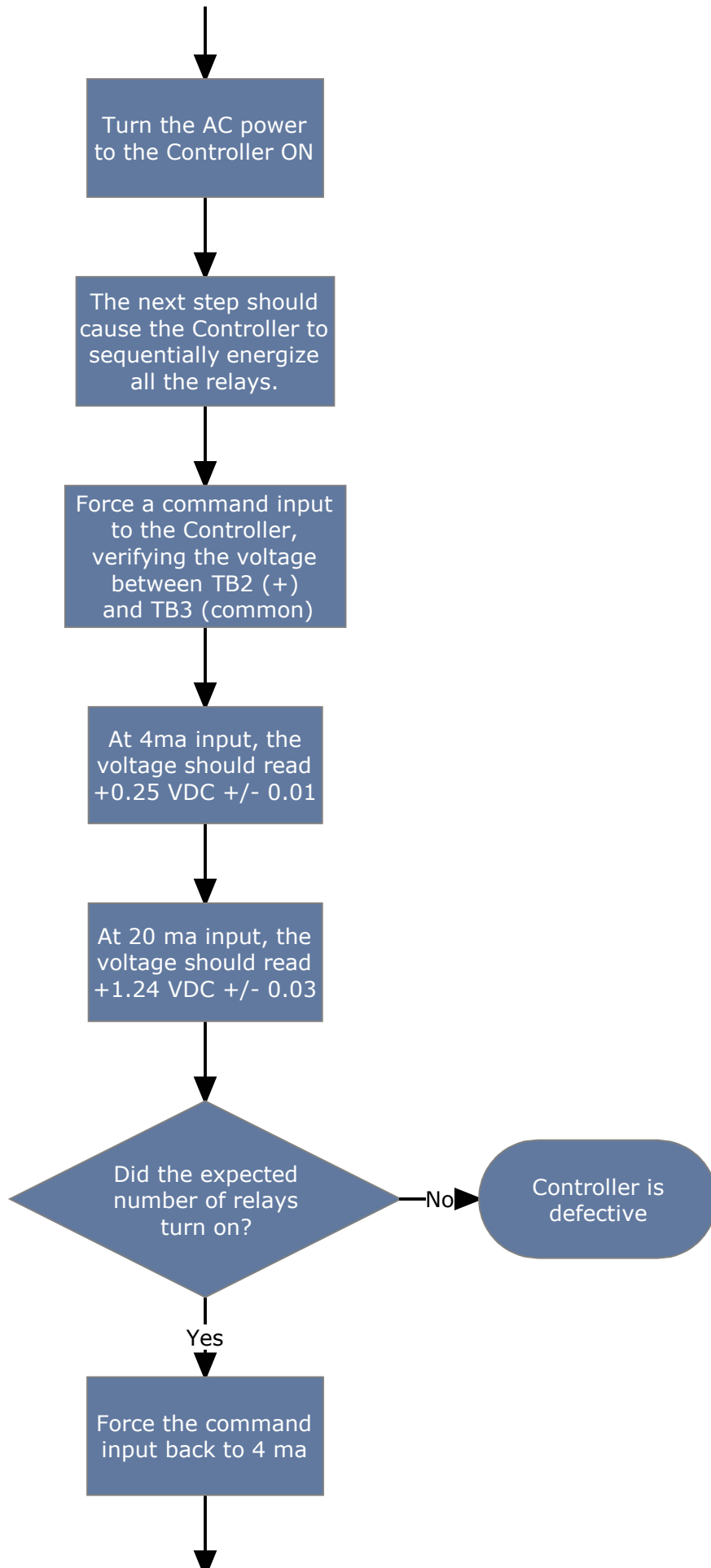


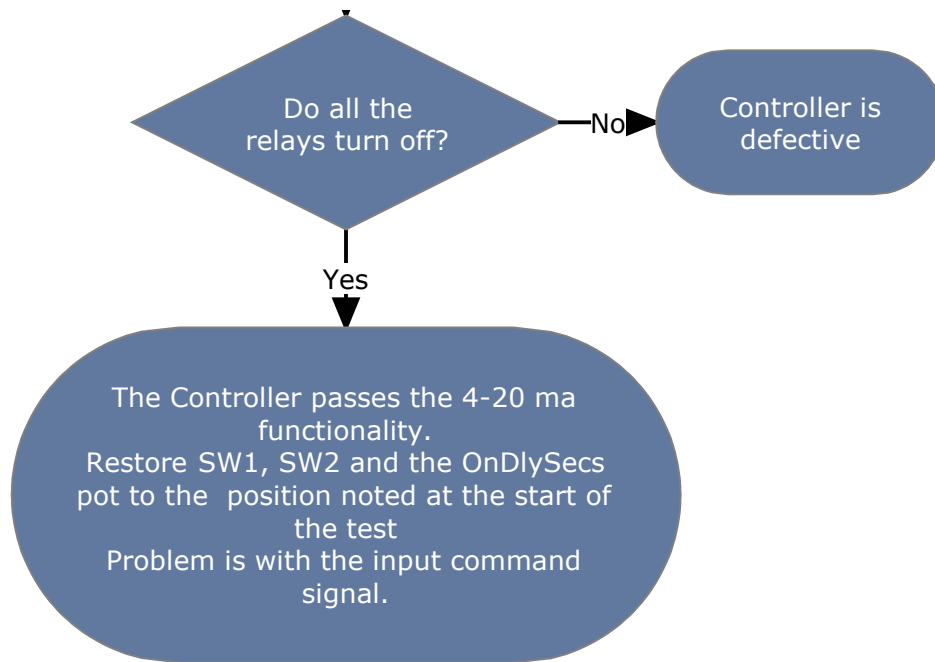












For systems with Controllers configured as Expansion Units

